

ANNA-40-7-W

~30° wide beam with 7 optics

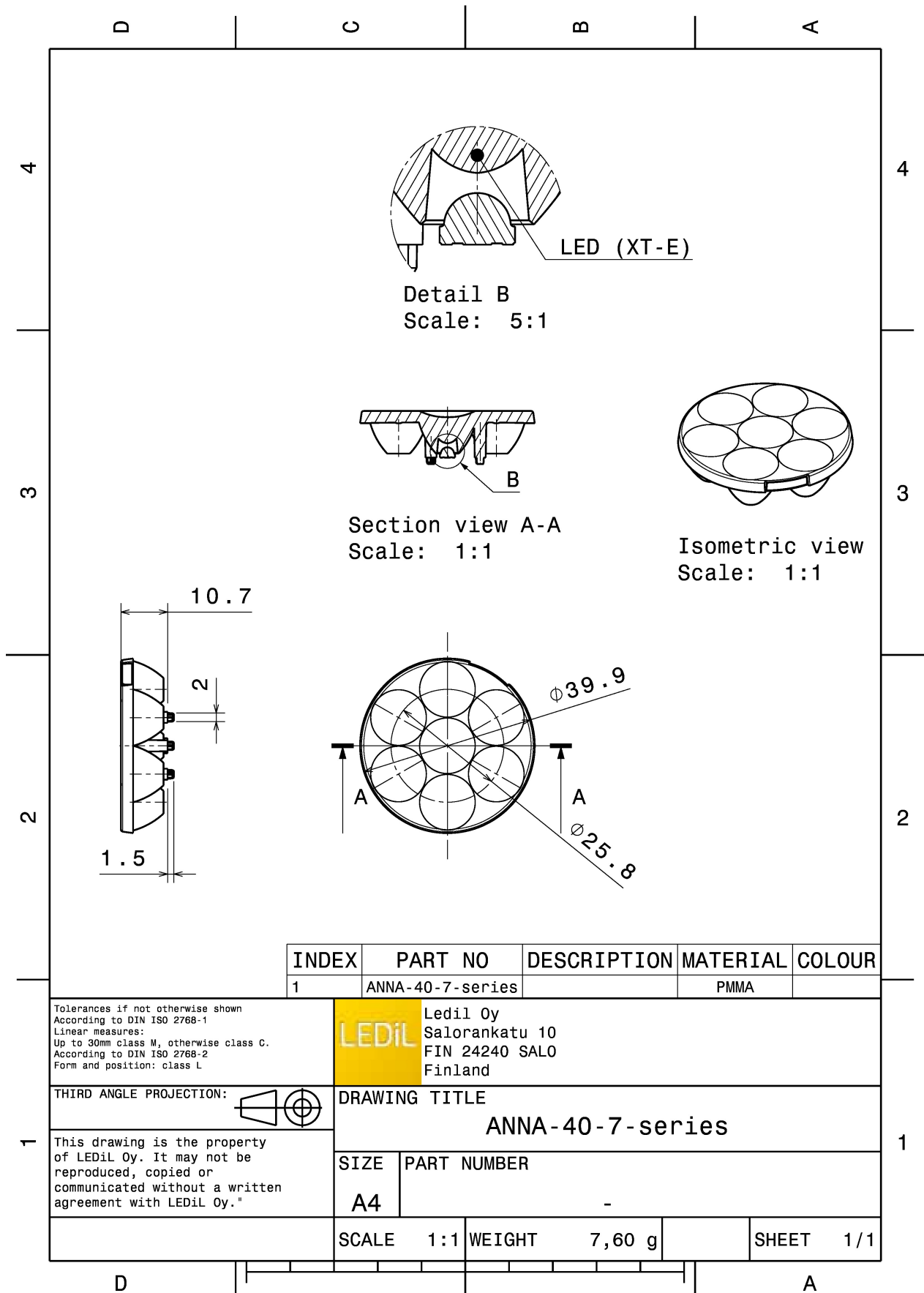
TECHNICAL SPECIFICATIONS:

Dimensions	Ø 40.0 mm
Height	10.7 mm
Fastening	pin
Colour	clear
Box size	480 x 280 x 300 mm
Box weight	7.5 kg
Quantity in Box	760 pcs
ROHS compliant	yes ⓘ



MATERIAL SPECIFICATIONS:

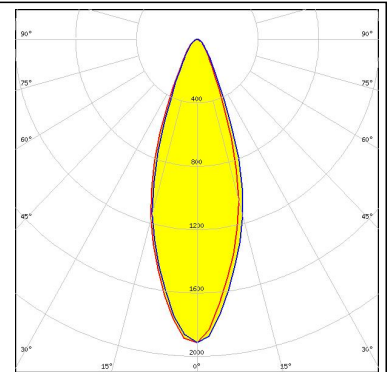
Component	Type	Material	Colour
ANNA-40-7-W	Lens array	PMMA	clear



PHOTOMETRIC DATA (MEASURED):

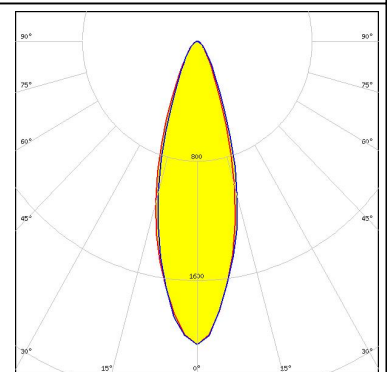
CREE 

LED XP-G2
FWHM 36.0°
Efficiency 88 %
Peak intensity 1.950 cd/lm
Required components:



CREE 

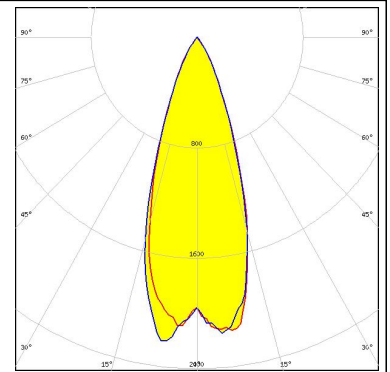
LED XT-E
FWHM 33.0°
Efficiency 86 %
Peak intensity 2.030 cd/lm
Required components:



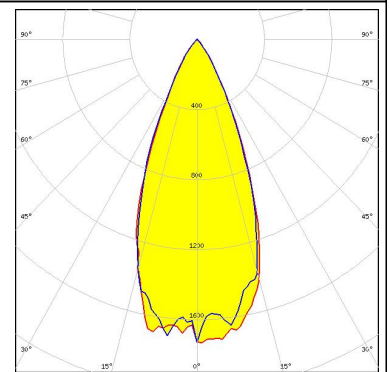
PHOTOMETRIC DATA (SIMULATED):



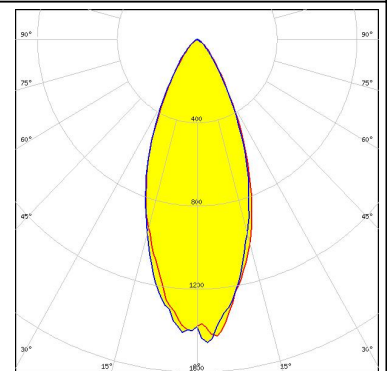
LED XB-D
FWHM 35.4°
Efficiency 89 %
Peak intensity 2.261 cd/lm
Required components:



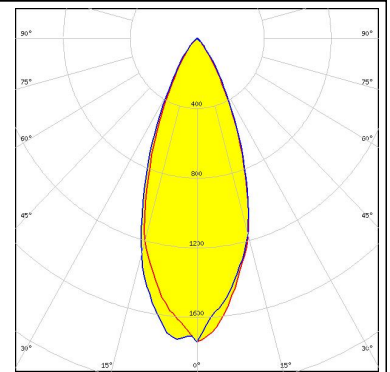
LED XP-G
FWHM 42.0°
Efficiency 92 %
Peak intensity 1.872 cd/lm
Required components:



LED XP-L
FWHM 41.0°
Efficiency 88 %
Peak intensity 1.470 cd/lm
Required components:



LED H35C0 (LEMWA33)
FWHM 39.0°
Efficiency 91 %
Peak intensity 1.740 cd/lm
Required components:




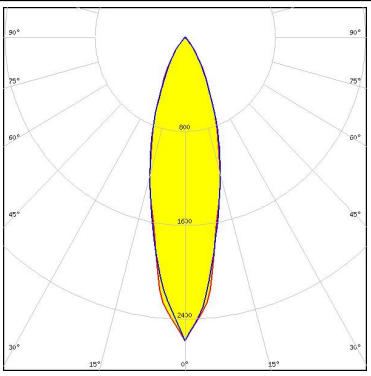
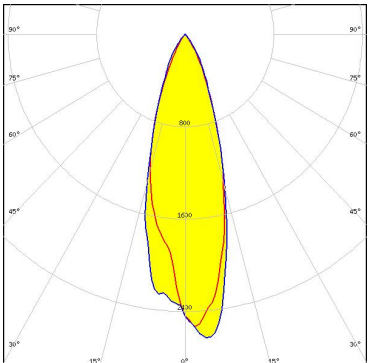
PHOTOMETRIC DATA (SIMULATED):

<p>LUMILEDS</p> <p>LED: LUXEON PWT FWHM: 14.7° Efficiency: 88 % Peak intensity: 8.565 cd/lm Required components:</p>	
<p>LUMILEDS</p> <p>LED: LUXEON T FWHM: 30.0° Efficiency: 92 % Peak intensity: 2.912 cd/lm Required components:</p>	
<p>LUMILEDS</p> <p>LED: LUXEON TX FWHM: 34.0° Efficiency: 92 % Peak intensity: 2.200 cd/lm Required components:</p>	
<p>NICHIA</p> <p>LED: NCSxx19A FWHM: 24.1° Efficiency: 88 % Peak intensity: 3.847 cd/lm Required components:</p>	

PHOTOMETRIC DATA (SIMULATED):

<p>NICHIA</p> <p>LED: NF2x757A FWHM: 19.5° Efficiency: 92 % Peak intensity: 4.978 cd/lm Required components:</p>	
<p>NICHIA</p> <p>LED: NVSxx19B/NVSxx19C FWHM: 32.0° Efficiency: 92 % Peak intensity: 2.320 cd/lm Required components:</p>	
<p>OSRAM Opto Semiconductors</p> <p>LED: Oslon Square EC FWHM: 31.5° Efficiency: 91 % Peak intensity: 2.760 cd/lm Required components:</p>	
<p>OSRAM Opto Semiconductors</p> <p>LED: SFH 4715S FWHM: 18.0° Efficiency: 89 % Peak intensity: 6.614 cd/lm Required components:</p>	

PHOTOMETRIC DATA (SIMULATED):

<p> SEOUL SEMICONDUCTOR</p> <p>LED Z8Y22P FWHM 28.0° Efficiency 91 % Peak intensity 2.600 cd/lm Required components:</p>	
<p>SHARP</p> <p>LED Double Dome (GM2BB) FWHM 28.9° Efficiency 89 % Peak intensity 2.717 cd/lm Required components:</p>	

GENERAL INFORMATION:

NOTE: The typical beam angle will be changed by different color, chip size and chip position tolerance. The typical total beam angle is the full angle measured where the luminous intensity is half of the peak value.

MATERIALS:

As part of our continuous research and improvement processes, and to ensure the best possible quality and availability of our products, LEDiL reserves the right to change material grades without notice.

PRODUCT DATA USER AGREEMENT AND DISCLAIMER:

The measured data in the provided downloadable LEDiL Product Datasheets and Mechanical 2D-Drawings is rounded and provided as reference for planning. LEDiL Oy's optical specifications have been verified by conducting performance testing of the products in accordance with the company's quality system. The reported data are averaged results of multiple measurements with typical variation. LEDiL Oy reserves the right to without prior notification make changes and improvements to its products.

LEDiL Oy assumes neither warranty, nor guarantee nor any other liability of any kind for the contents and correctness of the provided data. The provided data has been generated with highest diligence but the provided data may in reality not represent the complete possible variation range of all intrinsic parameters. Therefore, in certain cases a deviation from the provided data could occur.

LEDiL Oy reserves the right to undertake technical changes of its products without further notification which could lead to changes in the provided data. LEDiL Oy assumes no liability of any kind for the possible deviation from any provided data or any other damage resulting from the usage of the provided data.

The user agrees to this disclaimer and user agreement with the download or usage of the provided files.

LEDiL Oy

Joensuunkatu 13
FI-24240 SALO
Finland

LEDiL Inc.

228 West Page Street
Suite D
Sycamore IL 60178
USA

Local sales and technical support

[www.ledil.com/
where_to_buy](http://www.ledil.com/where_to_buy)

Shipping locations

Salo, Finland
Hong Kong, China

Distribution Partners

[www.ledil.com/
where_to_buy](http://www.ledil.com/where_to_buy)